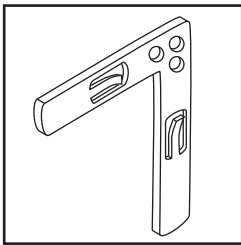
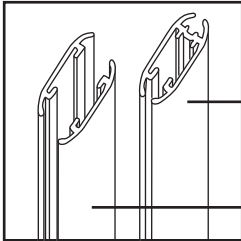


AnoFrame SnapOn System assembly

Parts



(8) Corner
Brackets

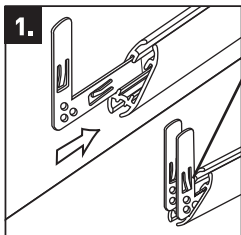


(3) Solid Ano Rails

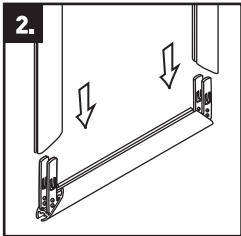
(2) Split Ano Rails

Steps

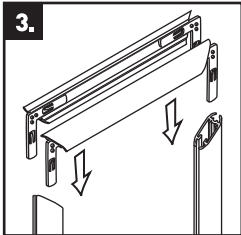
Frame Assembly



1. Identify split rails and solid rails. Solid rails are the same length as the split rails. Insert corner brackets into ends of these rails.

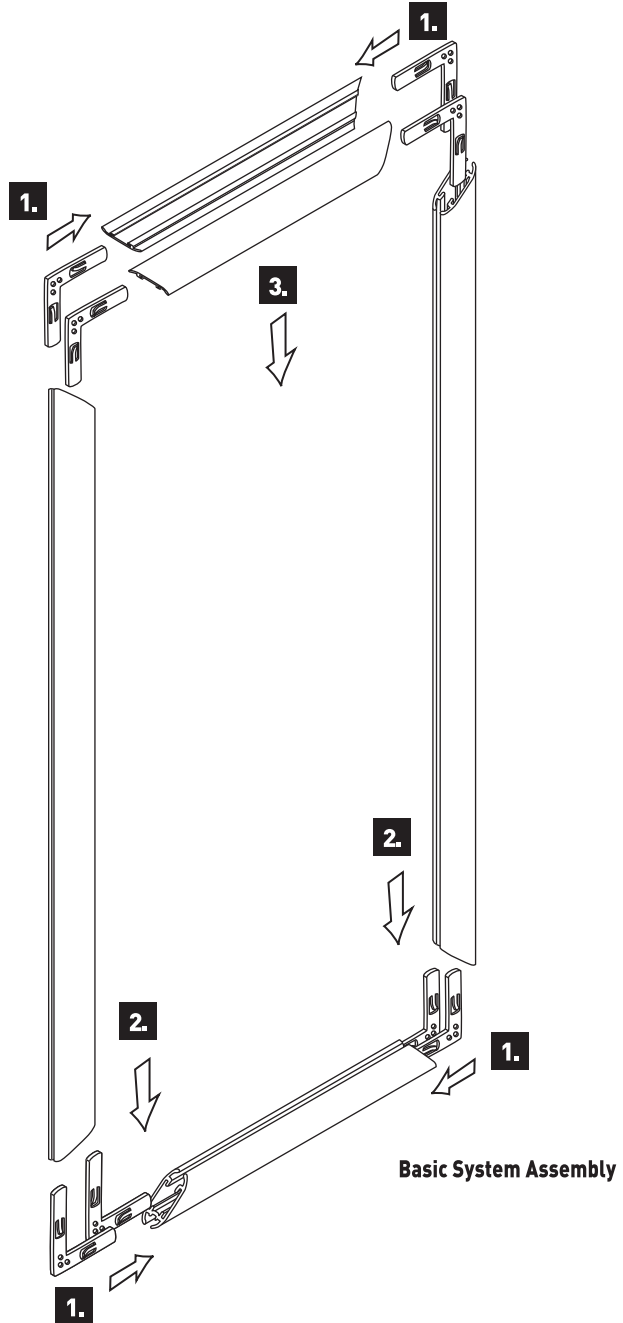


2. Push remaining solid rails onto solid rail with brackets from step 1.



3. Push split rails onto frame.

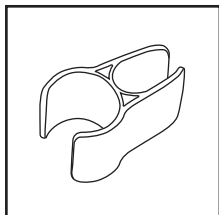
Note: Please layout parts in order on the floor before assembly.



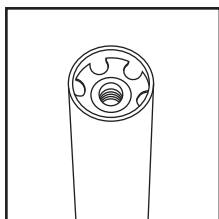
AnoFrame SnapOn System assembly

Parts

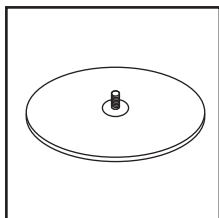
Note: Please layout parts in order on the floor before assembly.



SnapOn Clip™

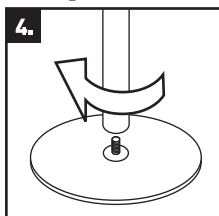


Pole

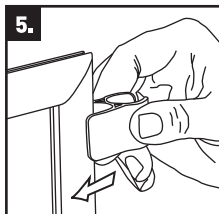


Pole Base

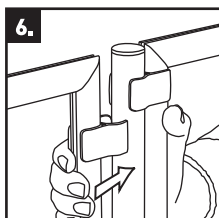
Steps



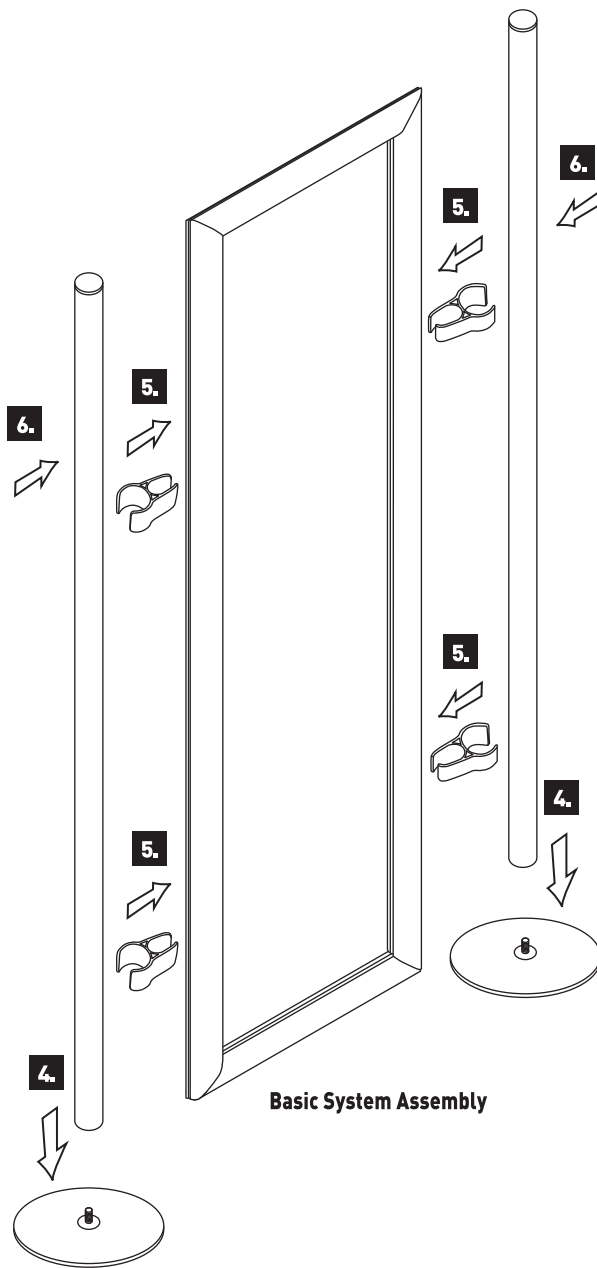
4. Screw poles onto bases. Tighten.



5. Snap clips onto frames first.



6. Then snap frames onto poles.



DRAWN BY IV		TITLE Installation Guidelines		
DATE 11/12/07	SCALE NTS	TYPE Signware Products	DRWG REF. Instructions - PDF	