

## Wall to Wall (WM11) - Rod Fixing

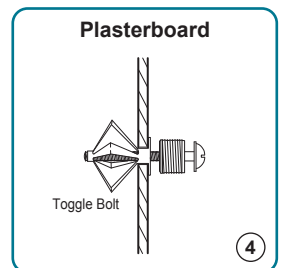
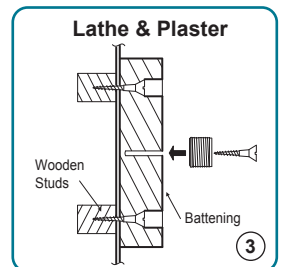
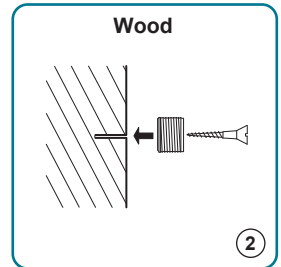
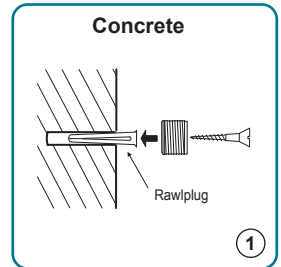
**IMPORTANT:** It is essential to check that the wall structure is strong enough to take the weight of the items being displayed.

- 1) Select the upper height to which rod is to begin. Affix brass fitting (A) to wall using a suitable fixing for the wall type:
  - for wooden walls use a wood screw.
  - for a cavity wall use a spring toggle bolt.
  - for a solid wall use a rawl plug and screw.
- 2) Using a plumb line; descend from (A) to the required position for the bottom fitting (A1) and affix.
- 3) Screw rod supports (B-B1) into the brass fittings (A-A1).
- 4) Loosen the set screws on the wall fittings (B-B1). Slide the rod (C) into the open cavities at required position, and tighten back the set screws with Allen Key provided. Rod needs to be cut to size before attaching to the wall.
- 5) Attach the decorative end cap (D-D1) to both ends of rod.
- 5) Attach any rod support fitting (E) to the rod.

**NOTE:** It is important to check the strength of the wall fixing(s). NOVA DISPLAY® takes no responsibility for incorrect installation. This responsibility rests with the installer.

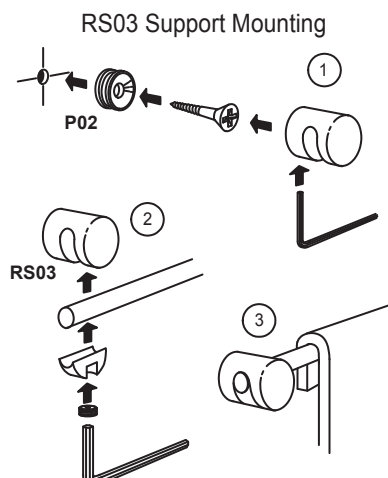
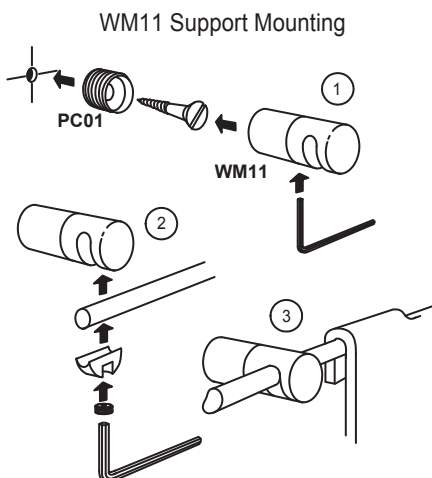
Rods are not supplied with fixing screws.

## INSTALLATION TIPS



## Wall Fixing Options

- 1) Fix rods directly to the wall with (WM11) or (RS03). Ideal for creating high impact graphics presentations.
- 2) For customized depth fix rods to the wall with (RP) connector - cut rod and fix with (RS05).



## RP - RS05 Customized Depth

